

kuraray

Noritake



**CLEARFIL™ DC
CORE PLUS &**

**CLEARFIL™
UNIVERSAL BOND
QUICK**

THE PERFECT TEAM FOR RELIABLE CORE BUILD-UPS

- Easy to use procedure
- Dual-cure
- Apply without effort

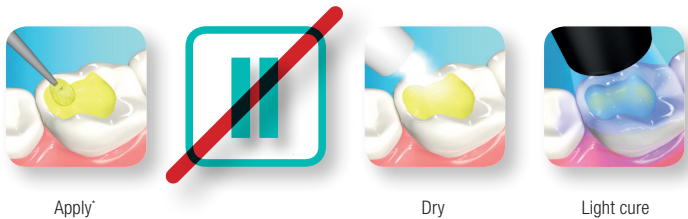
CLEARFIL™ Universal Bond Quick

APPLY AND PROCEED

CLEARFIL™ Universal Bond Quick is a universal bonding that works instantly. Just apply, dry and light cure. That's all. There is no need to wait for bonding penetration, multiple layer application or extensive rubbing time. Instead this new bonding uses Kuraray Noritake Dental's rapid bond technology to achieve lasting bond strength in one simple procedure. Uniform results, optimum adhesion.

A truly universal bond

CLEARFIL™ Universal Bond Quick can be used with almost all composite materials and also in cases where dual curing materials are required, for instance in post and core procedures. Simply use it the way you want. Self-etch, selective-etch or total-etch. You decide. CLEARFIL™ Universal Bond Quick is a primer, bonding, silane and metal primer in one, ensuring a fast adhesion and straightforward pretreatment. CLEARFIL™ Universal Bond Quick delivers optimum results without the need to wait. Just apply and proceed.



* Apply with a rubbing motion and proceed

THE PERFECT TEAM FOR POST CEMENTATION AND CORE BUILD-UPS

Due to its outstanding adhesion properties, CLEARFIL™ Universal Bond Quick is the perfect complement to CLEARFIL™ DC CORE PLUS. Because of its specific accelerator for self-curing, it is ideal for those areas which could not be reached by light. CUBQ adheres to dentin in the root channel and the post. A separate primer is not needed.





CLEARFIL™ DC CORE PLUS

EXEPTIONAL

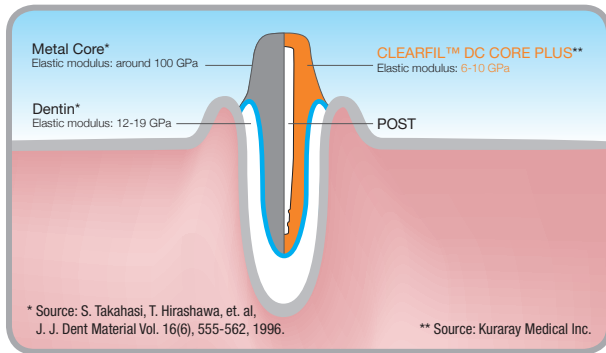
CLEARFIL™ DC CORE PLUS is a dual-cure (light-cure with self-curing property) core build-up material. The self-curing property is the perfect solution for those areas of root canal, which are not accessible for light. The special filler technology in CLEARFIL™ DC CORE PLUS gives the material an optimal thixotropy. As a result of this, you can apply the paste without effort. The non-slumping formula guarantees the paste will not be runny. For all steps, applying to root canal and core build-up, you can easily use only one mixing tip – thanks to the three-minute working time.

THE BENEFITS

- Easy to use procedure
- Dual-cure
- Apply without effort
- 'Non-slumping formula'
- Three minutes working time

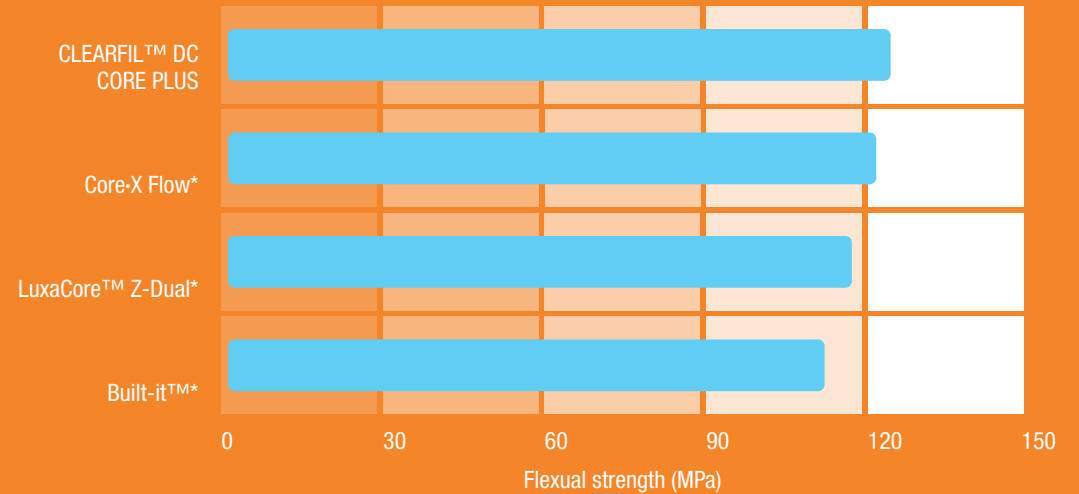
BALANCED MATERIAL CHARACTERISTICS

To avoid high occlusal stress to the end of the root, CLEARFIL™ DC CORE PLUS has an elastic modulus close to that of dentin. So the occlusal stress is dispersed on the complete surface of the root canal. Furthermore, despite of the chewing stress a stable restoration is ensured – thanks to the high mechanical properties of CLEARFIL™ DC CORE PLUS. Thus a minimal risk of root and core build-up material fracture can be assured.



FLEXURAL STRENGTH

CLEARFIL™ DC CORE PLUS shows the highest flexural strength in comparison to other core build-up materials.



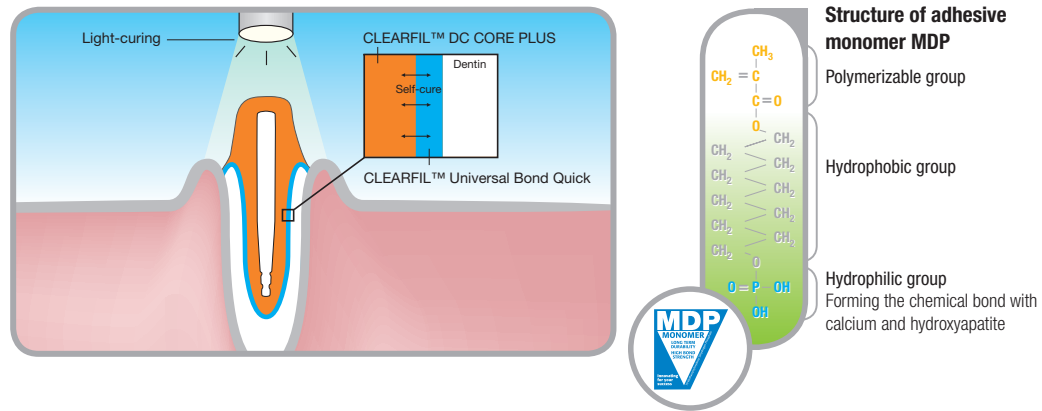
Source: Dr. C. J. Kleverlann, Academic Center for Dentistry Amsterdam, Netherlands

* No trademark of Kuraray

DUAL-CURING PROPERTIES FOR CORE BUILD-UPS

Now, CLEARFIL™ Universal Bond Quick is available to use in combination with CLEARFIL™ DC CORE PLUS. The specific accelerator for self-curing contained in CLEARFIL™ DC CORE PLUS ensures you excellent and reliable results for those areas which cannot be reached by light.

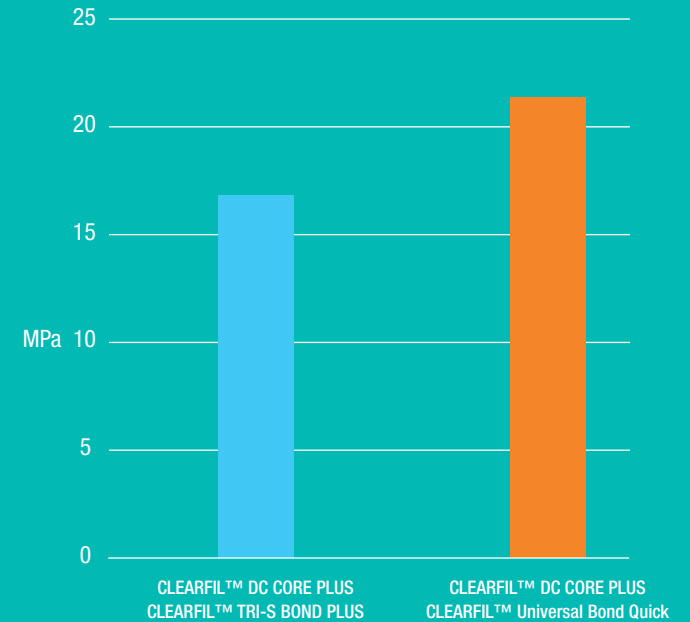
CLEARFIL™ Universal Bond Quick creates a strong chemical bond to hydroxyapatite. Thanks to the MDP monomer invented by Kuraray, it stands for high bond strength and shows a reliable adhesion durability to the tooth structure.



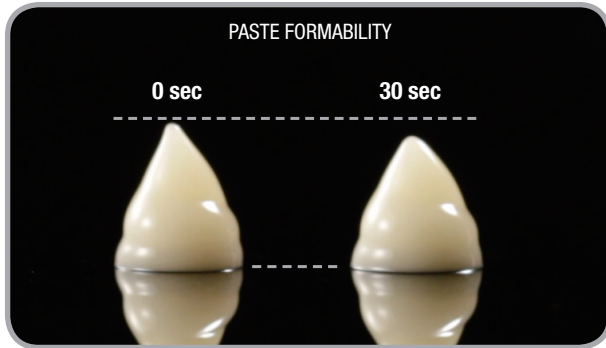
STRIKING BOND STRENGTH CONFIRMED!

We have substantially improved the bond strength to dentin as compared with our previous core build-up system.

Tensile bond strength to dentin with core build-up material



Source: Kuraray Noritake Dental Inc.

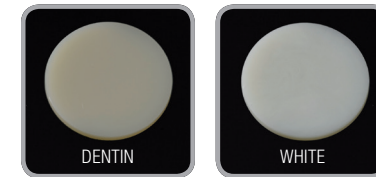


FLOWS WITH CONTROL

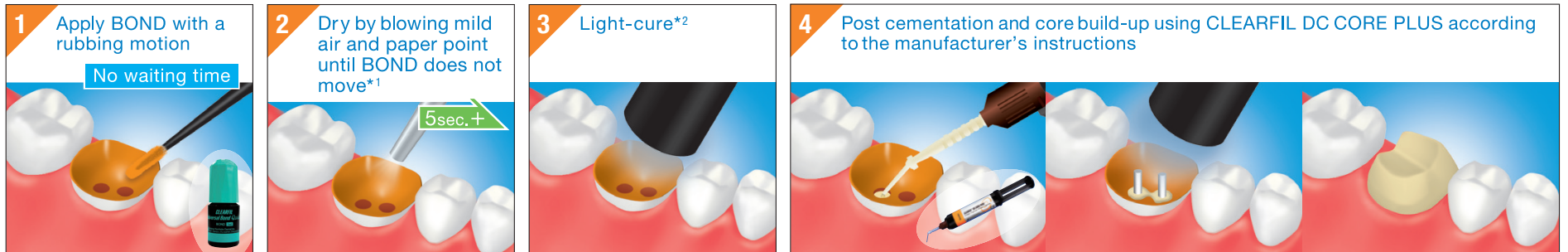
The paste is easy to dispense and easy to control, due to the unique filler surface treatment technology of CLEARFIL™ DC CORE PLUS.

SHADES

CLEARFIL™ DC CORE PLUS is available in the following shades.



EASY TO USE, STRESS-LESS CLINICAL PROCEDURE



*1 Use a vacuum aspirator to prevent BOND from scattering.

*2 Refer to the Table 1 for light-curing time.

NOTE: This is an abbreviated version. Please follow the Instructions for Use

PRODUCT RANGE

ARTICLE NUMBER	PRODUCT DESCRIPTION
#2942-EU DENTIN #2943-EU WHITE	CLEARFIL™ DC CORE PLUS Refill: 1 syringe (9 ml), 20 mixing tips, 10 guide tips (L), 10 guide tips (S)
#3571-EU	CLEARFIL™ Universal Bond Quick Bottle Standard Kit: 1 bottle (5 ml), K-ETCHANT Syringe (3 ml), Applicator Brush (x 50 pcs), Needle Tip (x 20 pcs), Mixing Dish, Light Blocking Plate



ARTICLE NUMBER	PRODUCT DESCRIPTION
#3572-EU	CLEARFIL™ Universal Bond Quick Bottle Refill (5 ml)
#3577-EU	CLEARFIL™ Universal Bond Quick Unit Dose Standard Pack: Unit Dose (50 pcs x 0.1 ml), K-ETCHANT Syringe (3 ml), Applicator Brush (x 50 pcs), Needle Tip (x 20 pcs)
#3574-EU	CLEARFIL™ Universal Bond Quick Bottle Value Pack (3 x 5 ml)
#3252-EU #3253-EU	K-ETCHANT Syringe K-ETCHANT Syringe (2 x 3 ml), Needle Tip (x 40 pcs) Needle Tips Needle Tip (x 20 pcs)



kuraray

Noritake

Kuraray Noritake Dental Inc.

Website www.kuraraynoritake.com/wd



Kuraray Noritake Dental Inc.

300 Higashiyama, Myoshi-cho, Miyoshi, Aichi 470-0293, Japan